



ZHEJIANG FULLWILL ELECTRIC CO., LTD.

Address: Sulv Industrial Zone, Liushi Town, Yueqing City, Zhejiang Province, China

Mobile: 0086 13706770280

Tel: 0086-577-61728833

Fax: 0086-577-61728822

Website: www.usfull.com / www.usfull.net

E-mail: scarlett@usfull.com

USFULL[®]

ZHEJIANG FULLWILL ELECTRIC CO., LTD.



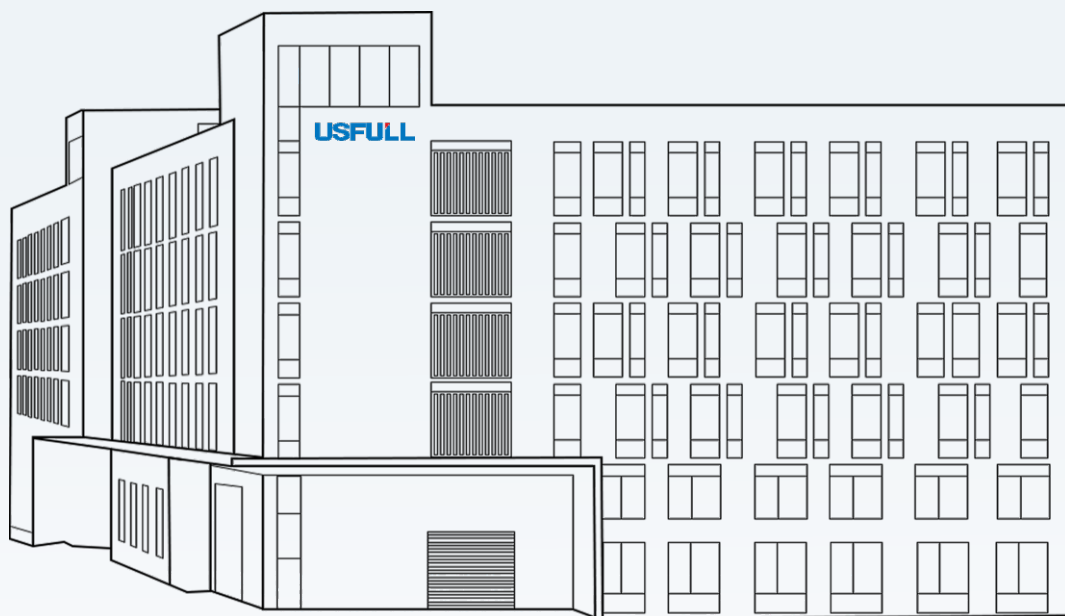
Solar Pump Inverter

www.usfull.net

www.usfull.com



Website



Company Introduction

Full of confidence, Will only offer satisfactory quality.

Zhejiang Fullwill Electric Co., Ltd. (brand: USFULL) was established in 2005. The company focuses on the R&D, manufacture and sales of products in four major areas, including industrial VFD, solar pump inverter, PV accessories, and low-voltage electrical products.

We have strong manufacture department and quality control department, to ensure state-of-art quality, stable performance and in-time delivery.

Full of energy, full of goodwill. USFULL team will keep moving to supply best solutions to customers.



Innovation



Services



Quality



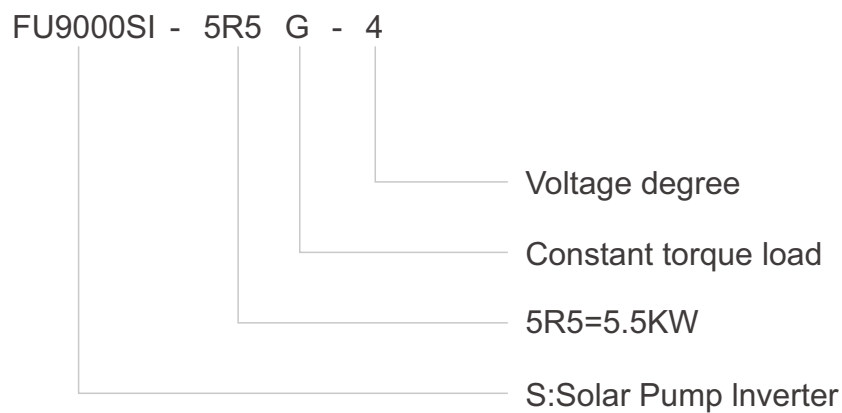
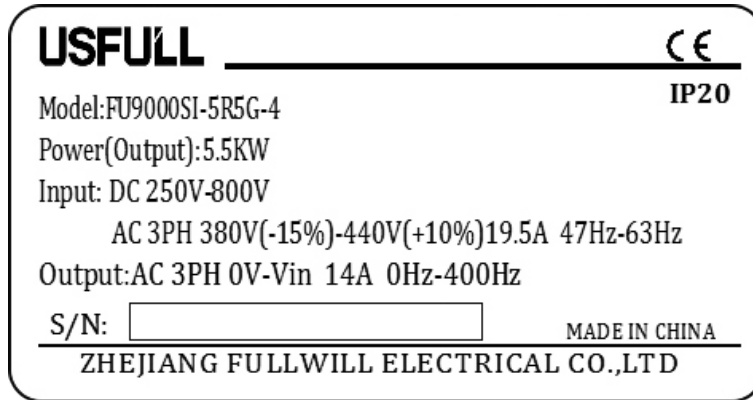
Sincerity

CONTENTS

Type Designation	01
Introduction of USFULL Solar Pumping System	02
Water Proof Solution	04
DC/AC Input Switch Solution	05
PV Accessories	06
Monitoring System	07
Recommend Solar Panel Connection	08



Type Designation



Voltage degree

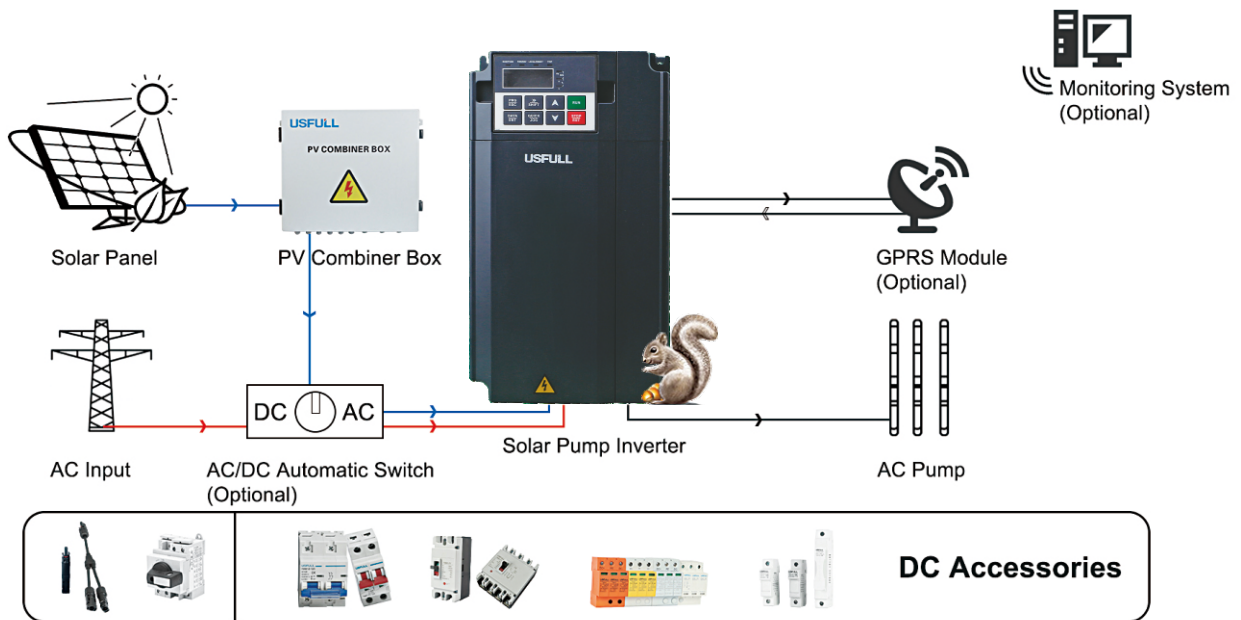
Model	-SS2	-S2	-2	-4
AC Input Voltage (V AC)	1Phase 220(-15%)~240(+10%)		3Phase 220(-15%) ~240(+10%)	3Phase 380(-15%) ~440(+10%)
Output Voltage (V AC)	1Phase 0-220V	3Phase 0-220V		3Phase 0-380V
Max. DC Voltage (V DC)	400			800
Start-up Voltage (V DC)	200			300
Lowest Working Voltage (V DC)	150			250
Recommend DC Input Voltage Range (V DC)	200~400			300~750
Recommend MPP Voltage(V)	330			550
Output Frequency	0-300Hz			

Rated Specifications

Series	Model	Rated Output Power (KW)	Rated Input Current (A)	Rated Output Current (A)
-SS2(0.75KW-4KW)	FU9000SI-0R7G-SS2	0.75	9.3	7.2
	FU9000SI-1R5G-SS2	1.5	15.7	10.2
	FU9000SI-2R2G-SS2	2.2	24	14
	FU9000SI-004G-SS2	4	32	25
-S2(0.75KW-2.2KW)	FU9000SI-0R7G-S2	0.75	9.3	4.2
	FU9000SI-1R5G-S2	1.5	15.7	7.5
	FU9000SI-2R2G-S2	2.2	24	10
-4(0.75KW-110KW)	FU9000SI-0R7G-4	0.75	3.4	2.5
	FU9000SI-1R5G-4	1.5	5	4.2
	FU9000SI-2R2G-4	2.2	5.8	5.5
	FU9000SI-004G-4	4	13.5	9.5
	FU9000SI-5R5G-4	5.5	19.5	14
	FU9000SI-7R5G-4	7.5	25	18.5
	FU9000SI-011G-4	11	32	25
	FU9000SI-015G-4	15	40	32
	FU9000SI-018G-4	18.5	47	38
	FU9000SI-022G-4	22	51	45
	FU9000SI-030G-4	30	70	60
	FU9000SI-037G-4	37	80	75
	FU9000SI-045G-4	45	94	92
	FU9000SI-055G-4	55	128	115
	FU9000SI-075G-4	75	160	150
	FU9000SI-090G-4	90	190	180
	FU9000SI-110G-4	110	225	215
	FU9000SI-132G-4	132	265	260
	FU9000SI-160G-4	160	310	305
	FU9000SI-185G-4	185	345	340
FU9000SI-200G-4	200	385	380	
FU9000SI-250G-4	250	468	465	
FU9000SI-280G-4	280	525	520	
FU9000SI-315G-4	315	590	585	



Introduction of USFULL Solar Pumping System



● High Efficiency Automatic MPPT

Maximum power point tracking function guarantees the system get the highest power output from solar panel and maximizes the efficiency of pumping system.

● Best Off-grid Solution

For off-grid area, solar pump inverter without battery is the most ideal solution for pumping.

● Professional Pump Protection

Automatic start and stop in the morning, for full tank and water shortage of water well.

● Easy Operation Program

The inverter is full automatic. After connect cables correctly, power on and it will run.

Water Proof Solution

USFULL offer several solutions for water and dust proof. Two classic methods are displayed as below.



Rated Power: 0.75kW-4kW (220V)
0.75kW-7.5kW (380V)

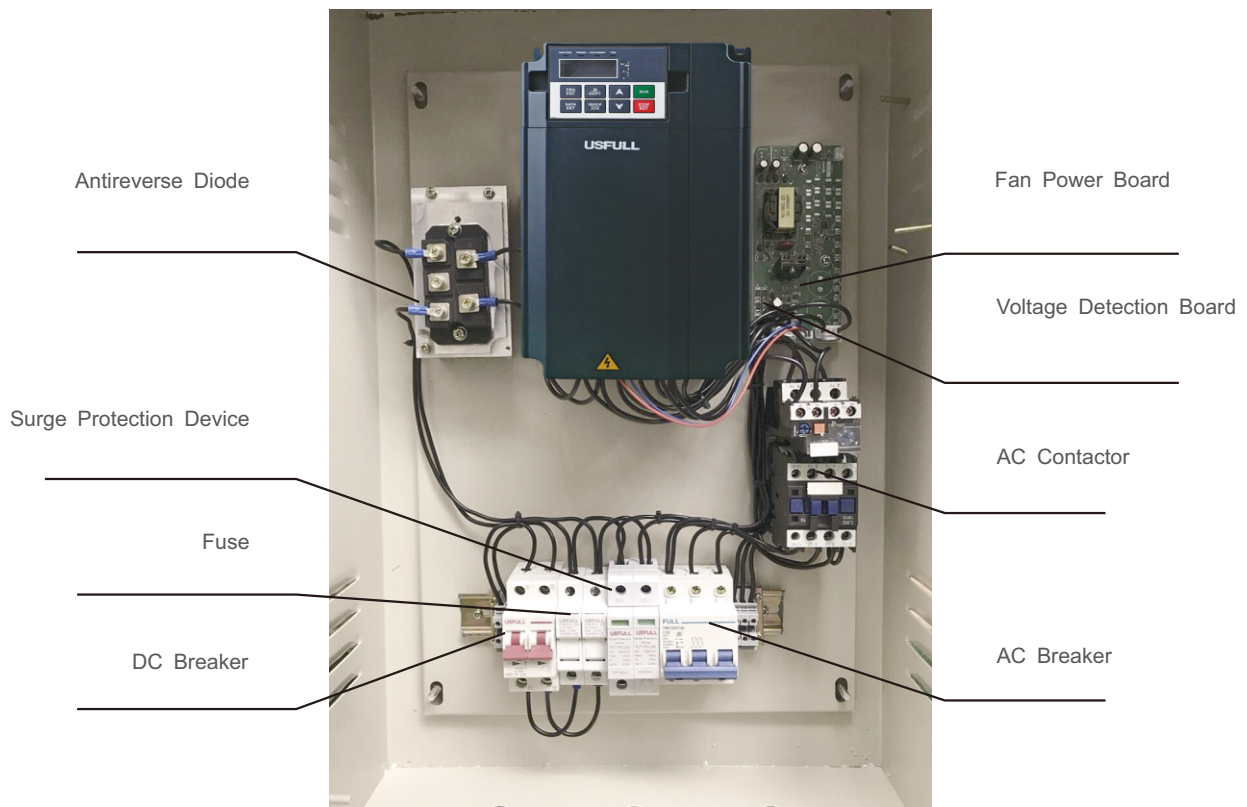
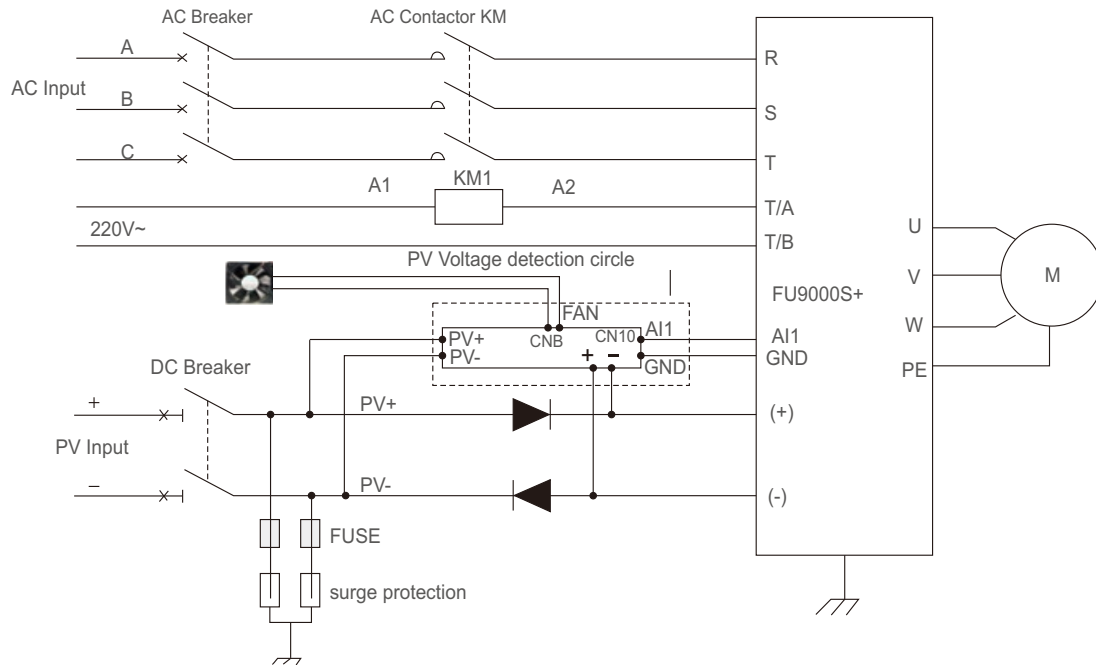
Feature: Flexible for installation, no need enclosure for protection.



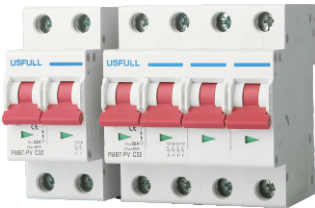
Rated Power: 0.75kW-4kW (220V)
0.75kW-315kW (380V)

Feature: High quality enclosure.
Support electrical components build in.

DC/AC Input Switch Solution

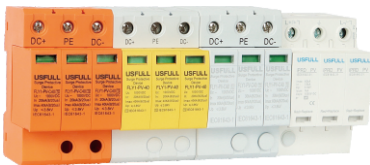


PV Accessories



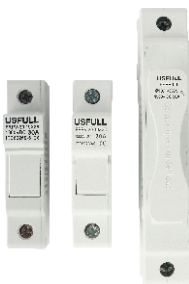
DC Breaker

Voltage: DC 12V, 24V, 48V, 250V, 500V, 750V, 1000V
 Current: 10A, 16A, 20A, 25A, 32A, 40A, 50A, 63A



DC SPD

Voltage: DC 600V, 800V, 1000V(recommend),
 1200V, 1500V
 In:20kA(recommend), 40kA
 I_{max}: 40kA(recommend), 60kA



DC Fuse

Voltage: 1000V, 1500V
 Current: 4A, 5A, 6A, 8A, 10A, 12A, 15A(recommend),
 20A, 25A, 30A



PV Combiner Box

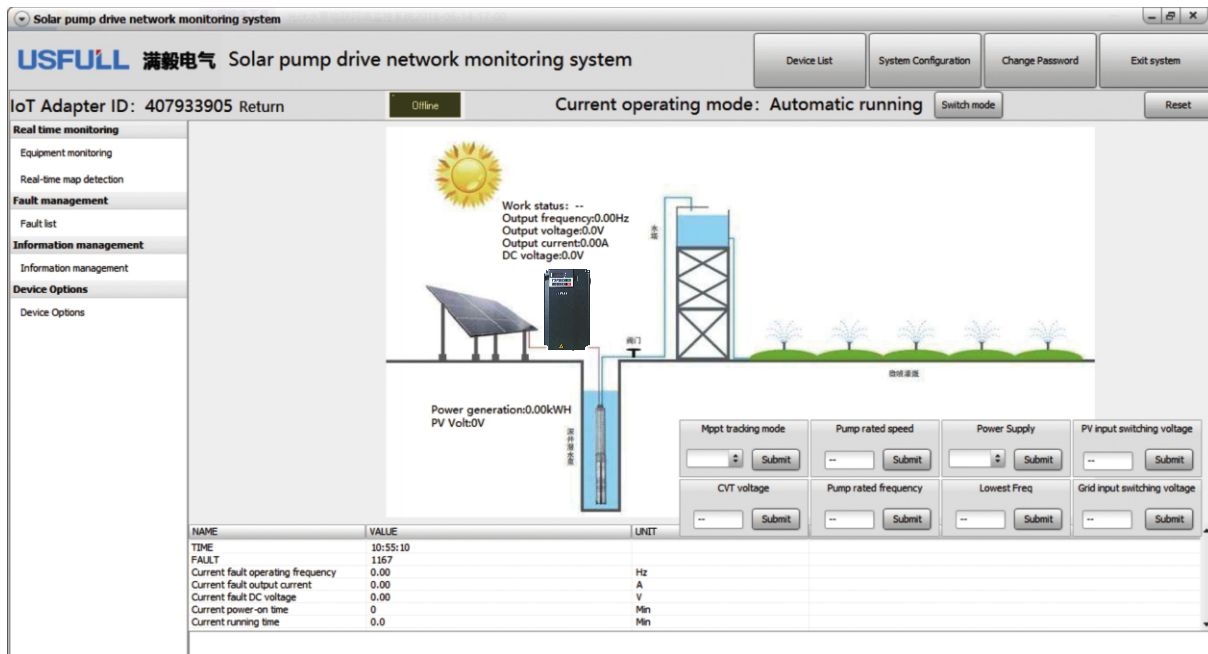
Plastic Box
 Input strings: 2 strings, 4 strings



PV Combiner Box

Iron Box
 Input strings: 2 strings, 4 strings, 6 strings, 8 strings,
 10 strings, 12 strings, 14 strings, 16 strings, 18 strings,
 20 strings, 22 strings, 24 strings

Monitoring System



Interface of monitoring system software

Introduction of monitoring system and GPRS module(optional)

With monitoring system and GPRS module(optional), users can control the solar pumping system from distance.

Users can control the working status of solar pump inverter, check real time monitoring(including MPPT, frequency, etc.) , fault management and other informations.



GPRS Module

Recommend Solar Panel Connection



VMP Voltage	29±1V		36±1V	
VOC Voltage	37±1V		45±1V	
Model Type	Module Power±5Wp	Module Per String* String Number	Module Power±5Wp	Module Per String* String Number
FU9000SI-0R7G-SS2	250W	11*1	300W	9*1
FU9000SI-1R5G-SS2		11*1		9*1
FU9000SI-2R2G-SS2		11*2		9*2
FU9000SI-004G-SS2		11*2		9*2
FU9000SI-0R7G-S2		11*1		9*1
FU9000SI-1R5G-S2		11*1		9*1
FU9000SI-2R2G-S2		11*1		9*1
FU9000SI-004G-S2		11*2		9*2
FU9000SI-0R7G-4		18*1		15*1
FU9000SI-1R5G-4		18*1		15*1
FU9000SI-2R2G-4		18*1		15*1
FU9000SI-004G-4		20*1		16*1
FU9000SI-5R5G-4		18*2		15*2
FU9000SI-7R5G-4		18*2		15*2
FU9000SI-011G-4		18*3		15*3
FU9000SI-015G-4		18*4		15*4
FU9000SI-018G-4		18*5		15*5
FU9000SI-022G-4		18*6		15*6
FU9000SI-030G-4		18*8		15*8
FU9000SI-037G-4		18*9		15*9